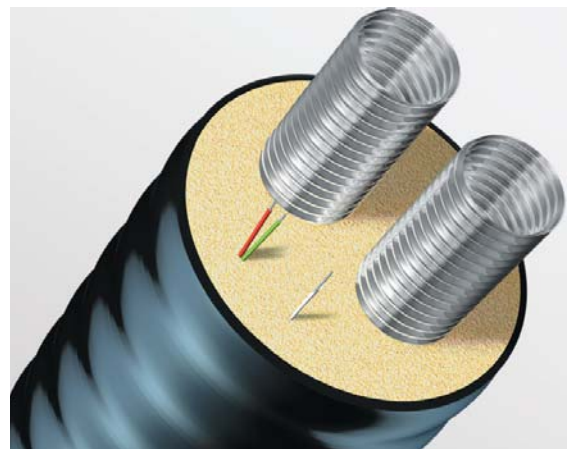
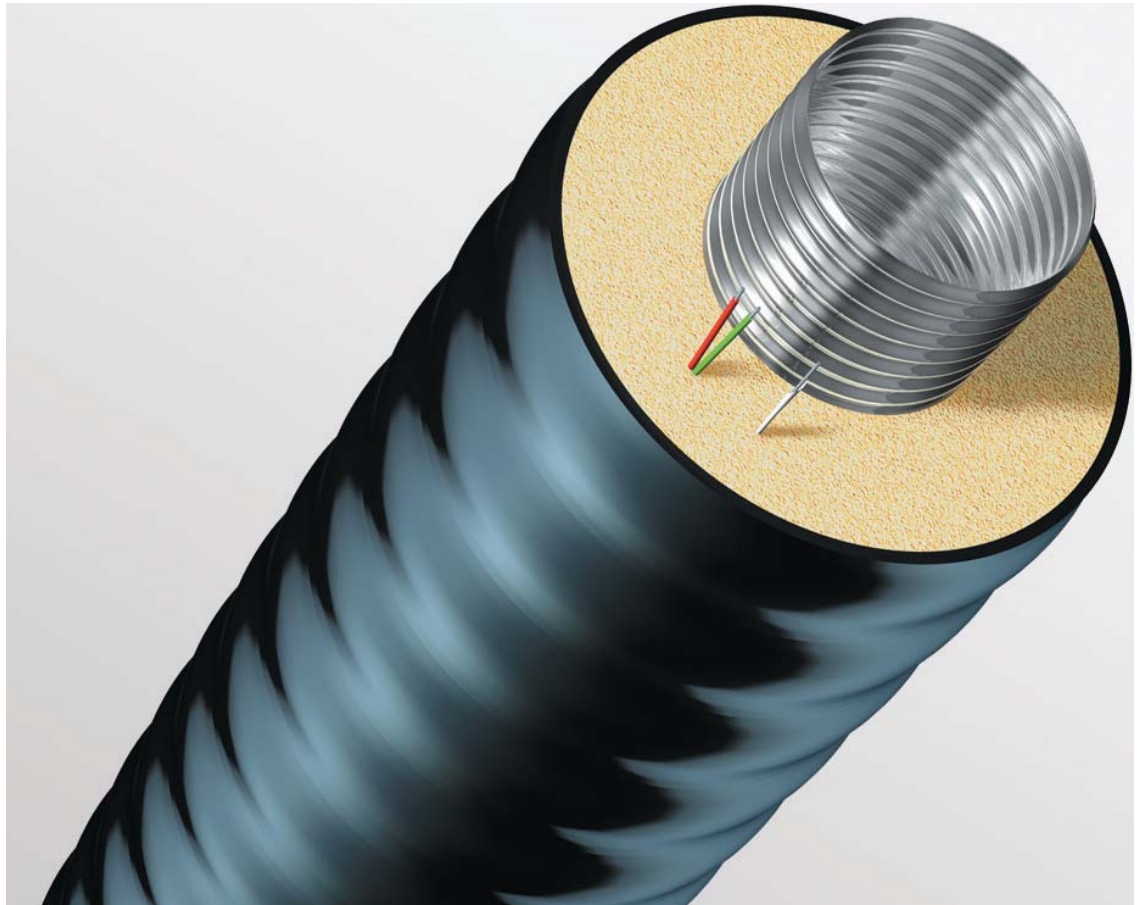
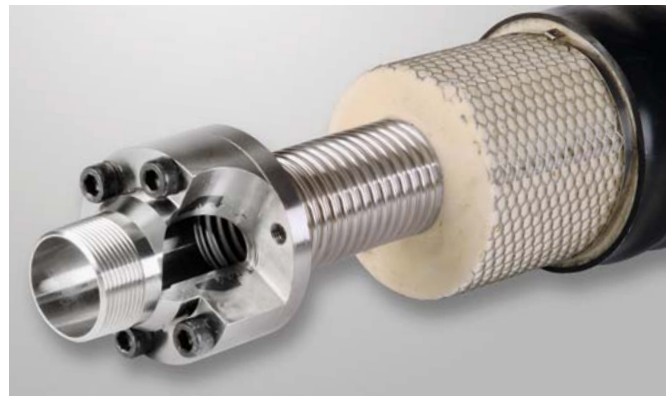


CASAFLEX®

HIGH TEMPERATURE PRE-INSULATED PIPING SYSTEM

PRODUCT OVERVIEW
EFFECTIVE FROM 1ST JANUARY 2010





Casaflex® the pipe system

CASAFLEX® a brand of Brugg Pipesystems is a flexible, self-compensating, pre-insulated pipe system featuring single or twin pipes made of stainless steel. Produced in large, project specific lengths at the factory, the pipe's main construction element is the helical, corrugated profile of the pipe itself.

Outstanding heat insulation even at high temperatures

The diffusion barrier and the design of CASAFLEX® pipe systems guarantee minimal heat loss even at high temperatures: operating temperature up to 160 °C, peak temperature up to 180 °C.

Structure

CASAFLEX® features a corrugated stainless steel carrier pipe. The pipe is insulated against heat loss by an outstandingly efficient, flexible, CFC-free hard polyurethane (polyisocyanurate) foam. A multilayer barrier film under the outer PE-LD cladding prevents the escape of cellular gases from the PIR hard foam.

The quality of a high temperature system lies in the heat insulation. The insulation of the CASAFLEX® tubes consists of fine-pored polyurethane foam that is blown using pentane. With a low volume and thin insulation, this achieves an excellent **Lambda value of 0.025 W/mK**. The low heat loss saves heating costs and reduces energy consumption over the long term.

Uses

CASAFLEX® domestic pipe systems are designed for use in local and district heating networks, in industry and in the use of renewable energies (including solar energies, wood chip/pellet boilers and solid fuel systems).



Flexible, self purging, self-compensating

The unique spiral corrugations are ideal for optimum flow rates and give the stainless steel pipe its special qualities, such as self purging and the elimination of linear expansion.

Safe and easily monitored

The use of three leak detecting conductors as standard means that CASAFLEX® is compatible with leading monitoring systems.

Cut planning costs: save on excavation

Cut costs on materials, assembly and excavation

Pipe systems that have proved to be extremely practical for large-scale mains construction are not necessarily competitive for the smaller distribution systems intended for end users.

It is virtually impossible to make further cost savings on the installation of traditional pipelines or the excavation work involved.

Trenching, pipeline installation and flange insulation can only be carried out consecutively and not simultaneously. With the result that construction sites obstruct road traffic for weeks on end.

No-hassle CASAFLEX®

The perfect solution to the problem is CASAFLEX®, the domestic connection system from Polytherm.

CASAFLEX® offers maximum flexibility without affecting quality or safety standards in the slightest. The trenches required are narrow and shallow and can be refilled rapidly, meaning major savings on excavations.



The one-day site

The connection from the mains pipe to the end user is a single, direct and continuous link. Combined with the fact that the pipe is laid directly from a roll, this slashes installation time to an absolute minimum. Apart from this, CASAFLEX® always permits you to take the shortest route from the mains or boiler house to the house connection.

CASAFLEX® bends easily, so the pipe can be routed around obstacles such as trees, bushes or even other pipes at different levels wherever and whenever necessary.

Flexible, simple & safe

Easy to install

CASAFLEX® is cut to the length specified by the customer and then delivered straight from our warehouse to the site as a roll. A fixing device allows the pipe to be rolled off a little at a time without sacrificing stability.

Simple connection technology

Advanced connection and component technologies permit time-saving connections to conventional pipe systems and standard connecting fittings.

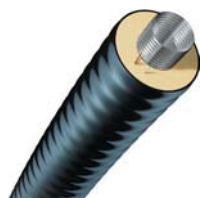
Connections at the house and to the mains are exceptionally simple thanks to a patented connection system from Brugg.

A few simple bolts secure all the necessary connections quickly and reliably with no need for special tools. No welding or calibration work is required, which means CASAFLEX® can be installed by skilled operatives at any time.

Quality from the specialists

The CASAFLEX® domestic connection system is manufactured under continual industrial batch conditions on computerized production lines developed specially by Brugg Pipesystems.

Qualified personnel combined with meticulous production and quality control guarantee the highest standards of safety and reliability for all CASAFLEX® district heating systems.



CASAFLEX® UNO



CASAFLEX® DUO



UNO ENDCAP



DUO ENDCAP



FITTING

CASAFLEX UNO					
Type		Min. Bend Radius		Part No.	Pipe Connector
mm	DN	Inches	m		(d x s) mm
22/91	20	3/4"	0.80	83801091	26.9 x 2.6
30/91	25	1"	0.80	83801290	33.7 x 3.2
39/111	32	1 1/4"	1.00	83801490	42.4 x 3.2
48/111	40	1 1/2"	1.00	83801690	48.3 x 3.2
60/126	50	2"	1.20	83801890	60.3 x 3.6
75/142	65	2 1/2"	1.50	83802590	76.1 x 3.6
98/162	80	3"	1.80	83802790	88.9 x 4.0
127/182	100	4"	2.00	83803000	114.3 x 4.5

CASAFLEX DUO					
22+22/111	20	3/4"	1.10	83803090	26.9 x 2.6
30+30/126	25	1"	1.40	83803190	33.7 x 3.2
39+39/142	32	1 1/4"	1.50	83803290	42.4 x 3.2
48+48/162	40	1 1/2"	1.80	83803390	48.3 x 3.2
60+60/182	50	2"	2.00	83803490	60.3 x 3.6

UNO ENDCAP					
22/91	20	3/4"	0.80	83911195	26.9 x 2.6
30/91	25	1"	0.80	83911295	33.7 x 3.2
39/111	32	1 1/4"	1.00	83911495	42.4 x 3.2
48/111	40	1 1/2"	1.00	83911690	48.3 x 3.2
60/126	50	2"	1.20	83911890	60.3 x 3.6
75/142	65	2 1/2"	1.50	83912190	76.1 x 3.6
98/162	80	3"	1.80	83912390	88.9 x 4.0
127/182	100	4"	2.00	N/A	114.3 x 4.5

DUO ENDCAP					
22+22/111	20	3/4"	1.10	83911690	26.9 x 2.6
30+30/126	25	1"	1.40	83911890	33.7 x 3.2
39+39/142	32	1 1/4"	1.50	83912190	42.4 x 3.2
48+48/162	40	1 1/2"	1.80	83912390	48.3 x 3.2
60+60/182	50	2"	2.00	83912490	60.3 x 3.6

HEATING FITTINGS (STEEL)				SANITARY FITTINGS (Stainless Steel)			
Type		Part No.		Type		Part No.	
mm	DN	Inches		mm	DN	Inches	
26.9 x 2.6	20	3/4"	83900195	26.9 x 2.6	20	3/4"	83900190
33.7 x 3.2	25	1"	83900295	33.7 x 3.2	25	1"	83900290
42.4 x 3.2	32	1 1/4"	83900395	42.4 x 3.2	32	1 1/4"	83900390
48.3 x 3.2	40	1 1/2"	83900495	48.3 x 3.2	40	1 1/2"	83900490
60.3 x 3.6	50	2"	83900595	60.3 x 3.6	50	2"	83900590
76.1 x 3.6	65	2 1/2"	83900694	76.1 x 3.6	65	2 1/2"	83900696
88.9 x 4.0	80	3"	83900894	88.9 x 4.0	80	3"	83900896
114.3 x 4.5	100	4"	N/A	114.3 x 4.5	100	4"	N/A

Operating parameters
 Operating temperature up to 160°C
 Peak temperatures up to 180°C
 Design: PN 16/25

Polytherm Heating Systems Ltd
Muirfield Drive
Naas Road
Dublin 12
Ireland
T +353 1 419 1990
F +353 1 458 4808
E info@polytherm.ie

www.polytherm.ie